

Coffee morning raised £400 for charity

A PARTY-themed coffee morning has raised a total of £411.59 for a cancer charity.

A prize draw was also held. Assistant manager Sharon Bowley said: "We'd like to say a massive thank-you to everyone who took part in making this a great success, especially those who donated the wonderful prizes."

08/58 Citroen C1 1.0 Rhythm 5dr
SCOOP PURCHASE
OUR PRICE
£4999

Combined Fuel Economy **62.8 MPG**

£20 ROAD FUND LICENCE

Cash for cars! We could buy your car for immediate cash... Call Matt Fleethy today for more details.

Bristol Street Motors
A Great Deal More For You
Nuthall Road, Nottingham NG8 5AT **0844 556 8549** Calls Charged at Local Rate

Model shown for illustration purposes only. www.bristolstreet.co.uk

Neighbourhood news



Artistic: Christopher Johnson, 4, from Basford and Blake Sheridan, 2, from Bulwell with an adventure play mat designed by Nottingham Contemporary. PICTURE: MATT ALEXANDER N0MA20111004A-1_C

Kids create games with toy library and gallery

Bulwell

By Dave Baxter and Rachel Stretton

CHILDREN from Bulwell have been producing games and activities for others to use.

The youngsters from Bulwell Community Toy Library teamed up with artists from Nottingham Contemporary on one of the projects.

The Play and Learn Trail, to be launched at the gallery on Saturday, October 22, includes hands-on play activities and interactive maps to help families explore it through a variety of activities.

Steve Parkinson, project manager at the library said: "We have worked with Nottingham Contemporary for a couple of years."

"What developed from there was the project where we worked together with their artists."

He said trail activity items made by the children would eventually be handed back to the toy library to benefit more children.

"It's a good thing because families going to Nottingham Contemporary will enjoy it,

but Bulwell kids can benefit from it when the gallery's done," he said.

The children have also created resources to be used at Bulwell Hall Park.

These include a currently unnamed game which will involve map use and outdoor activities.

Mr Parkinson said: "It's all

It's fantastic that the kids get to play outdoors and learn about the woods

Karen Chapel

part of a project to get young people more engaged with the outdoors.

"We're hoping that our free resources will help families to explore and have fun in the park while introducing them to the amazing benefits of outdoor play."

Parents and carers of children working on some of the projects at the library were impressed.

Tracey Johnson took her four-year-old son Chris along

on Tuesday. She said: "It's great for them to go off and explore the outdoors in groups and in a safe environment. Chris thought it was fun."

Karen Chapel, child minder to Kara Gathercole, two, said: "It's fantastic that the kids get to play outdoors and learn all about the woods."

"Too many children just sit indoors and play video games now."

"Kara enjoyed looking at the pictures of animals and picking up leaves."

Saima Kaur, community programmer at Nottingham Contemporary, said: "It's been amazing working with children and the toy library on this project."

"We've helped them to create resources which will help families get outside and play, and they've helped us to create our new Play and Learn Trail, which will help families to explore, learn and play at the Contemporary."

"All the children involved should be very proud of their achievement."

POST with your toast! Steve Parkinson's favourite breakfast is toast with marmalade and a cup of tea.

Care home's textile tribute to Geraldine

TEXTILE artists have clubbed together to pay tribute to a Bestwood care home manager.

Geraldine Sharp died suddenly last September just before the new Cherry Trees care home opened.

Following her death, donations flooded in for the grandmother who spent 30 years caring for dementia sufferers.

Managers at the care home used the cash to commission

five textile panels from a group called Fabric Focus, which uses the care home, in Chippenham Road, as its base.

The panels show colourful scenes such as children's playtime, under-the-sea scenes and a vase of tulips.

A textile art installation, which was created by residents at the care home, has also been completed.

The plaques and installation

will be unveiled at the start of a week-long celebration called A Tribute To Geraldine.

A craft fair will mark the beginning of the event on Saturday, when visitors can get a guided tour of the five textile panels.

The celebration continues from next Monday to Thursday, when guided tours of the plaques and the exhibition will run between 1pm and 3pm.

Bestwood

Crackdown on unpaid fines

By Jayne Garfitt

A POLICE inspector has praised the "persistence and perseverance" of officers involved in a clampdown on unpaid fines.

One man was jailed and four others were arrested in the operation, which targeted the non-payment of fines for offences ranging from criminal damage and assault, to traffic violations.

The largest single amount owed was more than £13,000 in child support payments. It resulted in a 50-year-old man from Bestwood being arrested and jailed for 46 days.

Inspector Rob Wilson of Notts Police said he had been particularly pleased by the work officers had put into the clampdown.

"I was extremely pleased with the work of those involved in the operation," he said.

"From the neighbourhood police officers and special officers to the warrant officers from the Magistrates' court - they all did a very good job."

"They were persistent in visiting people's houses, they located people who had considerable fines outstanding and

[Fines] are not in any way a 'let-off' for those they are handed down to

Inspector Rob Wilson

their perseverance and persistence paid off in the arrests of several people, one of whom went straight to prison.

"It's the sort of thing we repeat on an ongoing basis and we will certainly be doing so in the future."

Areas covered by the operation included Bestwood, Top Valley, Edwards Lane and Basford.

The four other people arrested for owing amounts between £235 and £747 were taken to Nottingham Magistrates' Court where new arrangements were made for the repayment of the fines.

Mr Wilson said the fines often included compensation being paid to the victim so it was absolutely vital that police ensured they were paid.

"Fines are imposed by courts as an alternative to custodial sentences, but they are not in any way a 'let-off' for those they are handed down to," he said.

"There is a crime to be paid for, perhaps also a victim to be compensated, and the level of the fine will reflect those factors. If people are not paying their fine then that person is

not making repayments to society, so it's important that justice is done.

"Arrangements can be made by the courts to ensure repayment can be made, either in full or by instalment. Should anyone who has an outstanding fine struggle to pay it or have a change of circumstances, they can always telephone the magistrates' court or go in person to speak to the staff there.

"If you do nothing about it or simply refuse to pay, the court service will pass that information on to the police. We will seek a warrant and that can lead to the arrest and, perhaps, as we saw in one case last week, imprisonment of persistent non-payers."

Anyone with problems paying an unpaid fine should visit Nottingham Magistrates' Court or contact the court on 0115 955 8111.

Bulwell

Sleuth lessons from CSI expert

A FORENSIC expert is to give a talk about crime scene investigation at Bulwell Library tomorrow.

Former investigator Jonathan Wright, who now lectures at the University of Derby, will be at the library from 3.30pm.

He will lead visitors through a crime scene, showing how the police and forensic experts analyse the evidence.

The event is part of a programme organised by Nottingham City Council.

Call Bulwell Library on 0115 915 5708 for more details.

Aspley



Fighting fit: A new boxing club has been officially opened in Aspley. The Fit2Fight boxing club is based at the ACT Centre, in Minver Crescent, Aspley. It has been paid for by the Sporting Hearts charity, which aims to provide activities for young people. Pictured are youngsters from the club with, from left, Sheriff of Nottingham Councillor Leon Unczur, Paul Lowe of Sporting Hearts, and Sam Sangha, managing director of Nottingham food store Asiana.

THE BANG & OLUFSEN EXPERIENCE DAYS

FRIDAY OCTOBER 14
SATURDAY OCTOBER 15

Visit your local participating store and discover the world of Bang & Olufsen. Our open house Experience Days welcome both new customers looking to find out more about Bang & Olufsen products and our existing customers.

Have a play with the products first hand and see how they can work for you in your home. Bring the family and get involved in the fun!

Go to www.bang-olufsen.com/storelocator to find your nearest participating store.



Scan the code with your smartphone. You will need a QR code reader app which can be downloaded from the app store.



bang-olufsen.com

BANG & OLUFSEN



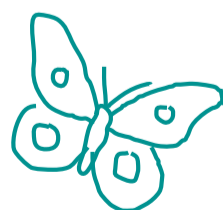
WHAT MOVES YOU

CONSIDERING COSMETIC SURGERY?

Talk to a leading cosmetic surgeon

Date 7.00pm, Wednesday 2nd November 2011
Venue BMI The Park Hospital, Sherwood Lodge Drive, Burntstump Country Park, Nottingham NG5 8RX
Free 5 minute consultation

To secure your free place call **0115 966 2000** or visit www.bmihealthcare.co.uk/park



BMI The Park Hospital

THE CONSULTANTS' CHOICE

BREAST ENLARGEMENT ■ TUMMY TUCK ■ BREAST LIFT ■ FACE LIFT ■ RHINOPLASTY ■ LIPOSUCTION